

Business • Leisure



www.dragon-hotel.co.uk

A MEMBER OF
CLASSIC
BRITISH HOTELS



Welcome

A landmark in Swansea for almost 50 years, The Dragon Hotel is enjoying a new lease of life following a major refurbishment. Now boasting facilities that are unrivalled in the city centre, The Dragon Hotel has been transformed into an exclusive contemporary style hotel that will meet the demands of even the most discerning guests, whatever their requirements.

Located at the heart of Swansea's vibrant city centre, The Dragon Hotel is perfect for experiencing the city's many and varied shops and bars, and is an ideal location from which to explore the award-winning Gower Peninsula just a short drive away. When you have finished exploring and need to rest and recuperate, The Dragon Hotel has everything you will need.





Accommodation

All 106 rooms are furnished to the highest standard with luxurious finishing touches that lift The Dragon Hotel a class above the average hotel and create the perfect place to recharge your batteries, whether you are visiting for business or pleasure.

Each room benefits from satellite TV, internet access, hairdryer, tea/coffee making facilities, Play stations, in-room movies and air conditioning. The spacious Executive Rooms and Suites offer extras such as complimentary towelling bathrobes and mini-bars to help make your stay all the more relaxing.

The majority of rooms are non-smoking. Guests can check-in from 2.00pm on day of arrival. Check-out is 12.00 noon.



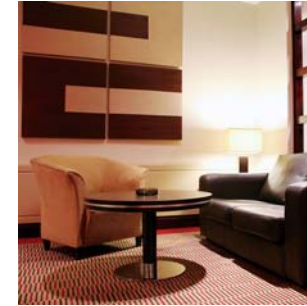


Health & Leisure Club

The Dragon Health & Leisure Club is the best in Swansea's city centre and as a visitor to The Dragon Hotel, you can make full use of all its impressive facilities. If you are feeling active, you can work up a sweat in the Advanced Precor Gymnasium, followed by a dip in the 18-metre swimming pool. Alternatively, if you just want to relax you can enjoy a session in the separate male and female saunas.

Visit the Beauty Treatment Room to undergo Holistic or Sports Massage Therapy or simply lie back and be pampered from head-to-toe with a superb range of treatments from Dermalogica, including Facials, Manicures and Ultra Soothing Body and Seaweed Wraps.





The Dragon Brasserie & Lounge

The Dragon Brasserie, at street level, offers an informal and leisurely dining experience and serves a contemporary mix of European style cuisine and light bites. Open daily Monday through Saturday, The Dragon Brasserie offers an impressive selection of wines, many of which can be enjoyed by the glass and which provide the perfect accompaniment to any dish. Light and airy with floor to ceiling windows, it is an ideal place to watch the world go by as you dine with friends, family or business colleagues.

Set against a dynamic and contemporary backdrop, the Lounge on the first floor, with its comfortable seating and large screen plasma television is an ideal place to kick back and relax. The full range of delights from The Dragon Brasserie is also available in the Lounge.



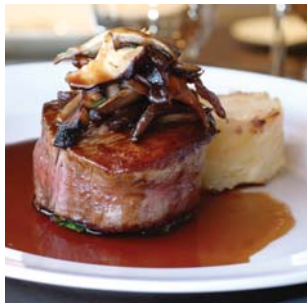
Piano Bar & Restaurant

Home to the culinary flair of our award-winning head chef, the sophisticated glass fronted Piano Bar and Restaurant offers the ultimate fine-dining experience and has developed a reputation as one of the most desirable places to dine in Swansea.

Situated on the first floor, the restaurant offers spectacular panoramic views across the city centre and is the perfect setting for any special occasion.

The lovingly crafted menus offer a mouth-watering range of Welsh cuisine using the finest locally sourced ingredients. The stylish surroundings, world-class food and relaxing piano music make this venue unique in Swansea.

The Piano Bar and Restaurant hosts varied gourmet evenings and themed nights, please visit our web site for up-to-date information.



Weddings & Functions

Your Wedding Day will be the most exciting and memorable day of your life. We specialise in hosting wedding celebrations and our dedicated co-ordinators will advise and help you plan your day.

Our experience, attention to detail and superb facilities will ensure your wedding day will be one to remember.

At The Dragon Hotel we offer the complete wedding day package, including the **Civil Marriage or Civil Partnership Ceremony, Wedding Breakfast and Reception.**

All Wedding Packages include complimentary accommodation for the Bride and Groom with Champagne waiting to greet you in your Executive Suite.

Our modern, air conditioned function suites are ideal for any occasion whether you are planning a small family gathering or arranging your company's annual dinner dance. We have an extensive range of banqueting menus and facilities to suit all types of events, for example Anniversary Dinner, Award Ceremony, Retirement Luncheon, Fashion Show, Birthday Party and Christening Celebrations, to name but a few.

Discuss your requirements with us and we will tailor-make a package to suit you.



Meetings & Conventions

Ideally located in Swansea's city centre, The Dragon Hotel has a variety of air conditioned rooms with wireless internet access and an excellent range of equipment on site. We offer the professional support you need to host an effective business meeting, conference or exhibition for up to 230 delegates theatre style.

The selection of food and drink available during your stay will enhance any business venture and we pride ourselves on catering for individual tastes and special requirements.

The Health and Leisure Club, with use of the gymnasium and 18 metre indoor heated swimming pool, is an added attraction for delegates staying overnight. In addition, the Conference Organiser will be allocated an Executive Bedroom for the duration of their stay.

The Dragon Hotel offers a wide range of packages ideal for entertaining clients, employees, encouraging team building or just to have fun and get to know each other. Joining forces with local event specialists The Dragon Hotel can provide a host of fun and exciting activities such as:

- Paint Balling
- Golf Days
- Archery
- Kite Surfing
- Surfing
- Rock Climbing
- Problem Solving
- Indoor Climbing
- Rock Hopping
- Mountain Biking
- Themed Evenings
- Horse Riding

Discuss your requirements with us and we will tailor-make a package to suit you.



Floor Plan & Room Capacity Chart

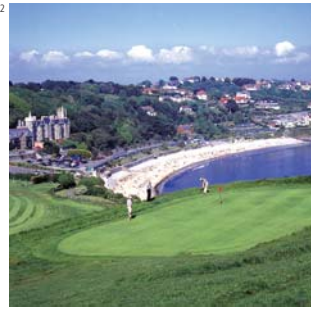


NAME	MAXIMUM CAPACITY SEATED			ROOM DIMENSIONS	
	THEATRE	BOARDROOM	CLASSROOM	LENGTH	WIDTH
Pembrey Suite	230	60	120	23m	10m
Clyne Suite	20	15		6.7m	4.1m
Boardroom	20	18	12	6.7m	4.7m
Margam Suite	50	20		14.5m	9.5m
Restaurant				25.5m	6.5m

- Fully Equipped Meeting Rooms all with natural daylight
- Air Conditioned
- Wireless Internet Access
- Audio Visual Equipment
- Business Services
- Selection of Dining Options
- Accommodation Upgrade for Conference Organiser

All inclusive Day Delegate and Residential Packages available





Recreation and Attractions

Swansea, Wales' second largest city and birthplace of Dylan Thomas and Catherine Zeta Jones, is a lively and vibrant maritime city. Well known for its wide range of clubs, bars and restaurants to suite every age and taste, the Wind Street area has become the modern café area by day and by night is the liveliest street in the city!

Swansea boasts the largest indoor market in Wales where you can sample and buy many of our local delicacies such as cockles and laver bread, locally caught fresh fish and of course freshly baked Welsh Cakes. Swansea Market is also a great place for local souvenirs as is the quaint Victorian seaside resort of Mumbles, just a stone's throw away from the hotel. The 'Gateway to Gower' is famous for its long promenade leading to Mumbles Pier, its 1794 built lighthouse and its 13th century castle complete with panoramic views of Swansea Bay.

Gower Peninsula is the UK's first Area of Outstanding Natural Beauty and is 19 miles by 6 miles of award-winning beaches, dramatic cliffs, picturesque villages, rolling countryside, hills, valleys, woodland, dunes and breathtaking views. Steeped in history, the area boasts many ancient sites, monuments, caves, castles and landmarks. The oldest human burial chamber dating back to 3,500BC can be found there. The peninsula is a haven for walkers, offering short family walks as well as routes for the more experienced walker. Among other activities, you can try horse riding, water sports, golf or visit one of many pick-your-own fruit farms.

Swansea's Maritime Quarter is an award winning waterfront village, bubbling with bars, restaurants and boats aside the Swansea Bay coastal promenade. Home to both the oldest museum in Wales and one of the most modern, technologically interactive museums in the world, the marina also pays homage to Wales' best loved poet with the UK's first dedicated Literature Centre, the mural covered Dylan Thomas Theatre and a bronze statue of the bard commanding a powerful presence over Wales' City by the Sea.

Visit our website for further details of activity packages.



**THE
DRAGON
HOTEL**

Kingsway Circle,
Swansea. SA1 5LS
Tel: +44 (0)8704 299848